



# NUTRITION INFORMATION

## APPLE

**Nutrition Facts**  
Serving Size 57 g (2.0 oz)  
Servings Per Container 6 pies

Amount Per Serving		% Daily Value*	
<b>Calories</b> 210	Calories from Fat 90		
<b>Total Fat</b> 10g		<b>15%</b>	
Saturated Fat 5g		<b>25%</b>	
Trans Fat 0g			
<b>Cholesterol</b> 10mg		<b>3%</b>	
<b>Sodium</b> 180mg		<b>8%</b>	
<b>Total Carbohydrate</b> 28g		<b>19%</b>	
Dietary Fiber 1g		<b>4%</b>	
Sugars 12g			
Protein 1g			
Vitamin A 0%	Vitamin C 0%		
Calcium 0%	Iron 4%		

\*Percent (%) of a Daily Value are based on a 2,000 calorie diet. Your daily values may be higher or lower depending on your calorie needs.

Calories	2,000	2,500
Total Fat	Less than 65g	80g
Sat Fat	Less than 20g	25g
Cholesterol	Less than 300mg	300mg
Sodium	Less than 2400mg	2400mg
Total Carbohydrate	300g	375g
Dietary Fiber	25g	30g

Calories per gram: 50g 65g  
Fat 9 • Carbohydrate 4 • Protein 4

**INGREDIENTS:** WHEAT FLOUR (WHOLE WHEAT FLOUR AND ENRICHED FLOUR (NIACIN, REDUCED IRON, THIAMIN MONONITRATE, RIBOFLAVIN, FOLIC ACID)), HIGH FRUCTOSE CORN SYRUP, CORN SYRUP, PARTIALLY HYDROGENATED VEGETABLE AND/OR ANIMAL SHORTENING (MAY CONTAIN SOYBEAN OIL, COTTONSEED OIL OR BEEF FAT), APPLES, WATER, SUGAR, TAPIOCA STARCH-MODIFIED, MAY CONTAIN 2% OR LESS OF THE FOLLOWING: SALT, GLYCERINE, MONO AND DIGLYCERIDES, DEXTROSE, SODIUM STEAROYL LACTYLATE, CORN SYRUP SOLIDS, CORN STARCH, AGAR AGAR, CALCIUM CARBONATE, CALCIUM SULFATE, CARBOXYMETHYL CELLULOSE, CITRIC ACID, SODIUM PROPIONATE, SODIUM BENZOATE, POTASSIUM SORBATE (TO RETARD SPOILAGE), SOYBEAN LECITHIN, CINNAMON, MALTODEXTRIN, NATURAL AND ARTIFICIAL FLAVORS.

**ALLERGEN INFORMATION:**  
CONTAINS: WHEAT AND SOY

MADE BY:  
**HORIZON FOOD GROUP**  
ESCONDIDO, CA 92029 U.S.A.  
TOLL FREE (800) 325-2692  
WWW.CUTIEPIE.COM



## BERRY

**Nutrition Facts**  
Serving Size 57 g (2.0 oz)  
Servings Per Container 6 pies

Amount Per Serving		% Daily Value*	
<b>Calories</b> 200	Calories from Fat 90		
<b>Total Fat</b> 10g		<b>15%</b>	
Saturated Fat 5g		<b>25%</b>	
Trans Fat 0g			
<b>Cholesterol</b> 10mg		<b>3%</b>	
<b>Sodium</b> 150mg		<b>6%</b>	
<b>Total Carbohydrate</b> 27g		<b>9%</b>	
Dietary Fiber 1g		<b>4%</b>	
Sugars 11g			
Protein 1g			
Vitamin A 0%	Vitamin C 0%		
Calcium 0%	Iron 4%		

\*Percent (%) of a Daily Value are based on a 2,000 calorie diet. Your daily values may be higher or lower depending on your calorie needs.

Calories	2,000	2,500
Total Fat	Less than 65g	80g
Sat Fat	Less than 20g	25g
Cholesterol	Less than 300mg	300mg
Sodium	Less than 2400mg	2400mg
Total Carbohydrate	300g	375g
Dietary Fiber	25g	30g

Calories per gram: 50g 65g  
Fat 9 • Carbohydrate 4 • Protein 4

**INGREDIENTS:** WHEAT FLOUR (WHOLE WHEAT FLOUR AND ENRICHED FLOUR (NIACIN, REDUCED IRON, THIAMIN MONONITRATE, RIBOFLAVIN, FOLIC ACID)), WATER, HIGH FRUCTOSE CORN SYRUP, CORN SYRUP, PARTIALLY HYDROGENATED VEGETABLE AND/OR ANIMAL SHORTENING (MAY CONTAIN SOYBEAN OIL, COTTONSEED OIL OR BEEF FAT), BLACKBERRIES, SUGAR, TAPIOCA STARCH-MODIFIED, MAY CONTAIN 2% OR LESS OF THE FOLLOWING: SALT, GLYCERINE, MONO AND DIGLYCERIDES, DEXTROSE, SODIUM STEAROYL LACTYLATE, CORN SYRUP SOLIDS, CORN STARCH, AGAR AGAR, CALCIUM CARBONATE, CALCIUM SULFATE, CARBOXYMETHYL CELLULOSE, CITRIC ACID, SODIUM PROPIONATE, SODIUM BENZOATE (TO RETARD SPOILAGE), MALTODEXTRIN, SOYBEAN LECITHIN, NATURAL AND ARTIFICIAL FLAVOR.

**ALLERGEN INFORMATION:**  
CONTAINS: WHEAT AND SOY

MADE BY:  
**HORIZON FOOD GROUP**  
ESCONDIDO, CA 92029 U.S.A.  
TOLL FREE (800) 325-2692  
WWW.CUTIEPIE.COM



## CHERRY

**Nutrition Facts**  
Serving Size 57 g (2.0 oz)  
Servings Per Container 6 pies

Amount Per Serving		% Daily Value*	
<b>Calories</b> 190	Calories from Fat 90		
<b>Total Fat</b> 10g		<b>15%</b>	
Saturated Fat 5g		<b>25%</b>	
Trans Fat 0g			
<b>Cholesterol</b> 10mg		<b>3%</b>	
<b>Sodium</b> 150mg		<b>6%</b>	
<b>Total Carbohydrate</b> 26g		<b>9%</b>	
Dietary Fiber 1g		<b>4%</b>	
Sugars 11g			
Protein 1g			
Vitamin A 2%	Vitamin C 2%		
Calcium 0%	Iron 4%		

\*Percent (%) of a Daily Value are based on a 2,000 calorie diet. Your daily values may be higher or lower depending on your calorie needs.

Calories	2,000	2,500
Total Fat	Less than 65g	80g
Sat Fat	Less than 20g	25g
Cholesterol	Less than 300mg	300mg
Sodium	Less than 2400mg	2400mg
Total Carbohydrate	300g	375g
Dietary Fiber	25g	30g

Calories per gram: 50g 65g  
Fat 9 • Carbohydrate 4 • Protein 4

**INGREDIENTS:** WHEAT FLOUR (WHOLE WHEAT FLOUR AND ENRICHED FLOUR (NIACIN, REDUCED IRON, THIAMIN MONONITRATE, RIBOFLAVIN, FOLIC ACID)), HIGH FRUCTOSE CORN SYRUP, CORN SYRUP, CHERRIES, PARTIALLY HYDROGENATED VEGETABLE AND/OR ANIMAL SHORTENING (MAY CONTAIN SOYBEAN OIL, COTTONSEED OIL OR BEEF FAT), WATER, SUGAR, TAPIOCA STARCH-MODIFIED, MAY CONTAIN 2% OR LESS OF THE FOLLOWING: SALT, GLYCERINE, MONO AND DIGLYCERIDES, DEXTROSE, SODIUM STEAROYL LACTYLATE, CORN SYRUP SOLIDS, CORN STARCH, AGAR AGAR, CALCIUM CARBONATE, CALCIUM SULFATE, CARBOXYMETHYL CELLULOSE, CITRIC ACID, SODIUM PROPIONATE, SODIUM BENZOATE (TO RETARD SPOILAGE), SOYBEAN LECITHIN, MALTODEXTRIN, NATURAL AND ARTIFICIAL FLAVORS, RED #40.

**ALLERGEN INFORMATION:**  
CONTAINS: WHEAT AND SOY

MADE BY:  
**HORIZON FOOD GROUP**  
ESCONDIDO, CA 92029 U.S.A.  
TOLL FREE (800) 325-2692  
WWW.CUTIEPIE.COM



## CHOCOLATE

**Nutrition Facts**  
Serving Size 57 g (2.0 oz)  
Servings Per Container 6 pies

Amount Per Serving		% Daily Value*	
<b>Calories</b> 200	Calories from Fat 90		
<b>Total Fat</b> 10g		<b>15%</b>	
Saturated Fat 5g		<b>25%</b>	
Trans Fat 0g			
<b>Cholesterol</b> 10mg		<b>3%</b>	
<b>Sodium</b> 160mg		<b>7%</b>	
<b>Total Carbohydrate</b> 27g		<b>9%</b>	
Dietary Fiber 1g		<b>4%</b>	
Sugars 12g			
Protein 2g			
Vitamin A 0%	Vitamin C 0%		
Calcium 0%	Iron 4%		

\*Percent (%) of a Daily Value are based on a 2,000 calorie diet. Your daily values may be higher or lower depending on your calorie needs.

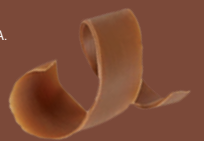
Calories	2,000	2,500
Total Fat	Less than 65g	80g
Sat Fat	Less than 20g	25g
Cholesterol	Less than 300mg	300mg
Sodium	Less than 2400mg	2400mg
Total Carbohydrate	300g	375g
Dietary Fiber	25g	30g

Calories per gram: 50g 65g  
Fat 9 • Carbohydrate 4 • Protein 4

**INGREDIENTS:** WHEAT FLOUR (WHOLE WHEAT FLOUR AND ENRICHED FLOUR (NIACIN, REDUCED IRON, THIAMIN MONONITRATE, RIBOFLAVIN, FOLIC ACID)), WATER, HIGH FRUCTOSE CORN SYRUP, CORN SYRUP, PARTIALLY HYDROGENATED VEGETABLE AND/OR ANIMAL SHORTENING (MAY CONTAIN SOYBEAN OIL, COTTONSEED OIL OR BEEF FAT), SUGAR, TAPIOCA STARCH-MODIFIED, MAY CONTAIN 2% OR LESS OF THE FOLLOWING: COCOA POWDER (PROCESSED WITH ALKALI) SALT, GLYCERINE, MONO AND DIGLYCERIDES, DEXTROSE, SODIUM STEAROYL LACTYLATE, CORN SYRUP SOLIDS, CORN STARCH, AGAR AGAR, CALCIUM CARBONATE, CALCIUM SULFATE, CARBOXYMETHYL CELLULOSE, CITRIC ACID, SODIUM PROPIONATE, POTASSIUM SORBATE, SODIUM BENZOATE (TO RETARD SPOILAGE), SOYBEAN LECITHIN, MALTODEXTRIN, NATURAL AND ARTIFICIAL FLAVORS.

**ALLERGEN INFORMATION:**  
CONTAINS: WHEAT AND SOY

MADE BY:  
**HORIZON FOOD GROUP**  
ESCONDIDO, CA 92029 U.S.A.  
TOLL FREE (800) 325-2692  
WWW.CUTIEPIE.COM



## LEMON

**Nutrition Facts**  
Serving Size 57 g (2.0 oz)  
Servings Per Container 6 pies

Amount Per Serving		% Daily Value*	
<b>Calories</b> 200	Calories from Fat 90		
<b>Total Fat</b> 10g		<b>15%</b>	
Saturated Fat 5g		<b>25%</b>	
Trans Fat 0g			
<b>Cholesterol</b> 10mg		<b>3%</b>	
<b>Sodium</b> 170mg		<b>7%</b>	
<b>Total Carbohydrate</b> 27g		<b>9%</b>	
Dietary Fiber 1g		<b>4%</b>	
Sugars 12g			
Protein 1g			
Vitamin A 0%	Vitamin C 0%		
Calcium 0%	Iron 4%		

\*Percent (%) of a Daily Value are based on a 2,000 calorie diet. Your daily values may be higher or lower depending on your calorie needs.

Calories	2,000	2,500
Total Fat	Less than 65g	80g
Sat Fat	Less than 20g	25g
Cholesterol	Less than 300mg	300mg
Sodium	Less than 2400mg	2400mg
Total Carbohydrate	300g	375g
Dietary Fiber	25g	30g

Calories per gram: 50g 65g  
Fat 9 • Carbohydrate 4 • Protein 4

**INGREDIENTS:** WHEAT FLOUR (WHOLE WHEAT FLOUR AND ENRICHED FLOUR (NIACIN, REDUCED IRON, THIAMIN MONONITRATE, RIBOFLAVIN, FOLIC ACID)), WATER, HIGH FRUCTOSE CORN SYRUP, CORN SYRUP, PARTIALLY HYDROGENATED VEGETABLE AND/OR ANIMAL SHORTENING (MAY CONTAIN SOYBEAN OIL, COTTONSEED OIL OR BEEF FAT), SUGAR, TAPIOCA STARCH-MODIFIED, MAY CONTAIN 2% OR LESS OF THE FOLLOWING: LEMON OIL, PULP, LEMON JUICE CONCENTRATE, LEMON OIL, SODIUM CITRATE, SALT, GLYCERINE, MONO AND DIGLYCERIDES, DEXTROSE, SODIUM STEAROYL LACTYLATE, CORN SYRUP SOLIDS, CORN STARCH, AGAR AGAR, CALCIUM CARBONATE, CALCIUM SULFATE, CARBOXYMETHYL CELLULOSE, CITRIC ACID, SODIUM PROPIONATE, SODIUM BENZOATE (TO RETARD SPOILAGE), MALTODEXTRIN, SOYBEAN LECITHIN, NATURAL AND ARTIFICIAL FLAVOR, TURMERIC.

**ALLERGEN INFORMATION:**  
CONTAINS: WHEAT AND SOY

MADE BY:  
**HORIZON FOOD GROUP**  
ESCONDIDO, CA 92029 U.S.A.  
TOLL FREE (800) 325-2692  
WWW.CUTIEPIE.COM



## PEACH

**Nutrition Facts**  
Serving Size 57 g (2.0 oz)  
Servings Per Container 6 pies

Amount Per Serving		% Daily Value*	
<b>Calories</b> 200	Calories from Fat 90		
<b>Total Fat</b> 10g		<b>15%</b>	
Saturated Fat 5g		<b>25%</b>	
Trans Fat 0g			
<b>Cholesterol</b> 10mg		<b>3%</b>	
<b>Sodium</b> 150mg		<b>6%</b>	
<b>Total Carbohydrate</b> 27g		<b>9%</b>	
Dietary Fiber 1g		<b>4%</b>	
Sugars 12g			
Protein 1g			
Vitamin A 0%	Vitamin C 2%		
Calcium 0%	Iron 4%		

\*Percent (%) of a Daily Value are based on a 2,000 calorie diet. Your daily values may be higher or lower depending on your calorie needs.

Calories	2,000	2,500
Total Fat	Less than 65g	80g
Sat Fat	Less than 20g	25g
Cholesterol	Less than 300mg	300mg
Sodium	Less than 2400mg	2400mg
Total Carbohydrate	300g	375g
Dietary Fiber	25g	30g

Calories per gram: 50g 65g  
Fat 9 • Carbohydrate 4 • Protein 4

**INGREDIENTS:** WHEAT FLOUR (WHOLE WHEAT FLOUR AND ENRICHED FLOUR (NIACIN, REDUCED IRON, THIAMIN MONONITRATE, RIBOFLAVIN, FOLIC ACID)), HIGH FRUCTOSE CORN SYRUP, CORN SYRUP, PARTIALLY HYDROGENATED VEGETABLE AND/OR ANIMAL SHORTENING (MAY CONTAIN SOYBEAN OIL, COTTONSEED OIL OR BEEF FAT), PEACHES, SUGAR, TAPIOCA STARCH-MODIFIED, MAY CONTAIN 2% OR LESS OF THE FOLLOWING: SALT, GLYCERINE, MALIC ACID, MONO AND DIGLYCERIDES, DEXTROSE, SODIUM STEAROYL LACTYLATE, CORN SYRUP SOLIDS, CORN STARCH, AGAR AGAR, CALCIUM CARBONATE, CALCIUM SULFATE, CARBOXYMETHYL CELLULOSE, SODIUM PROPIONATE, POTASSIUM SORBATE AND SODIUM BENZOATE (TO RETARD SPOILAGE), SOYBEAN LECITHIN, MALTODEXTRIN, NATURAL AND ARTIFICIAL FLAVORS, YELLOW #6.

**ALLERGEN INFORMATION:**  
CONTAINS: WHEAT AND SOY

MADE BY:  
**HORIZON FOOD GROUP**  
ESCONDIDO, CA 92029 U.S.A.  
TOLL FREE (800) 325-2692  
WWW.CUTIEPIE.COM

